

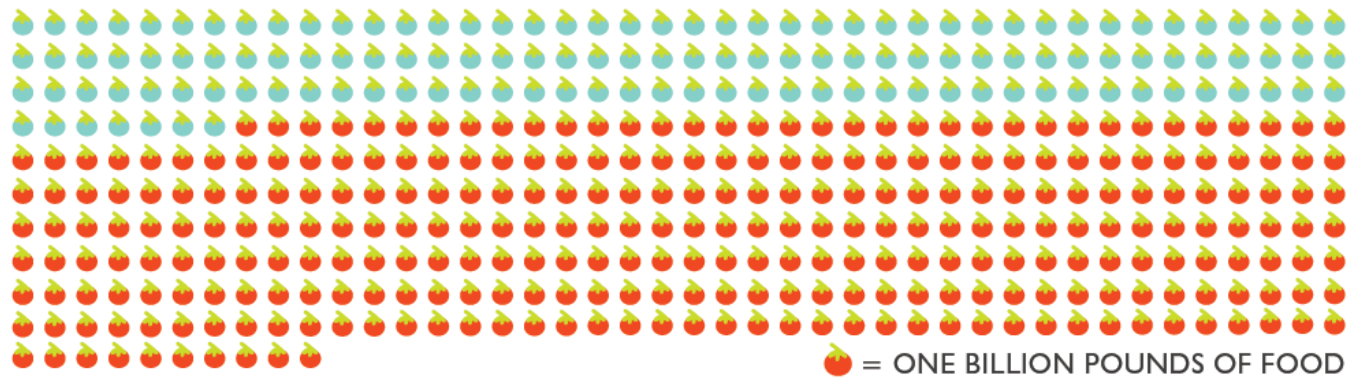
FOOD WASTE IN THE U.S.A.

Art by Lily Prinsen

40%

OF ALL FOOD PRODUCED IN THE U.S. IS WASTED

In the U.S. 31 percent – or 133 billion pounds – of the 430 billion pounds of available food supply at the retail and consumer levels in 2010 went uneaten



The estimated value of the lost food using retail prices.

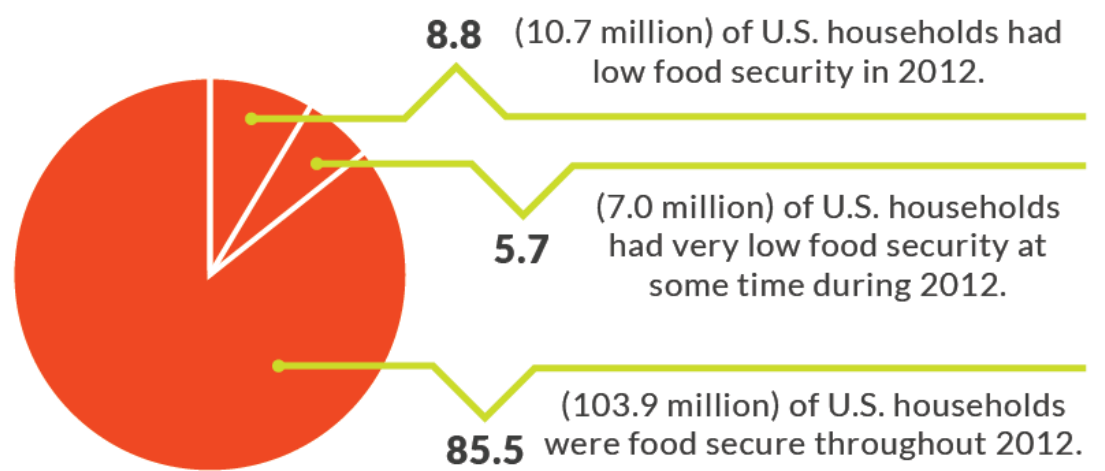
\$1 BILLION

Amount spent yearly to dispose of food waste

\$161.6 BILLION

141 TRILLION CALORIES

Estimated the calories associated with food loss in 2010, or 1,249 calories per capita per day.



40.9 M

PEOPLE IN THE U.S. ARE FOOD INSECURE

12.4 M

ADULTS LIVED IN HOUSES WITH VERY LOW FOOD SECURITY

8.3 M

CHILDREN LIVED IN HOUSES WHERE THEY AND ADULTS WERE FOOD INSECURE

977,000

CHILDREN LIVED IN HOUSES WHERE ONE OR MORE CHILD EXPERIENCED VERY LOW FOOD SECURITY

21

Methane is a potent greenhouse gas with 21 times the global warming potential of carbon dioxide.

20

Landfills account for more than 20 percent of all methane emissions in the U.S.

50

An estimated 50 million Americans do not have access to enough food.

36

In 2012 more than 36 million tons of food waste was generated, with only 5% diverted from landfills and incinerators for composting.